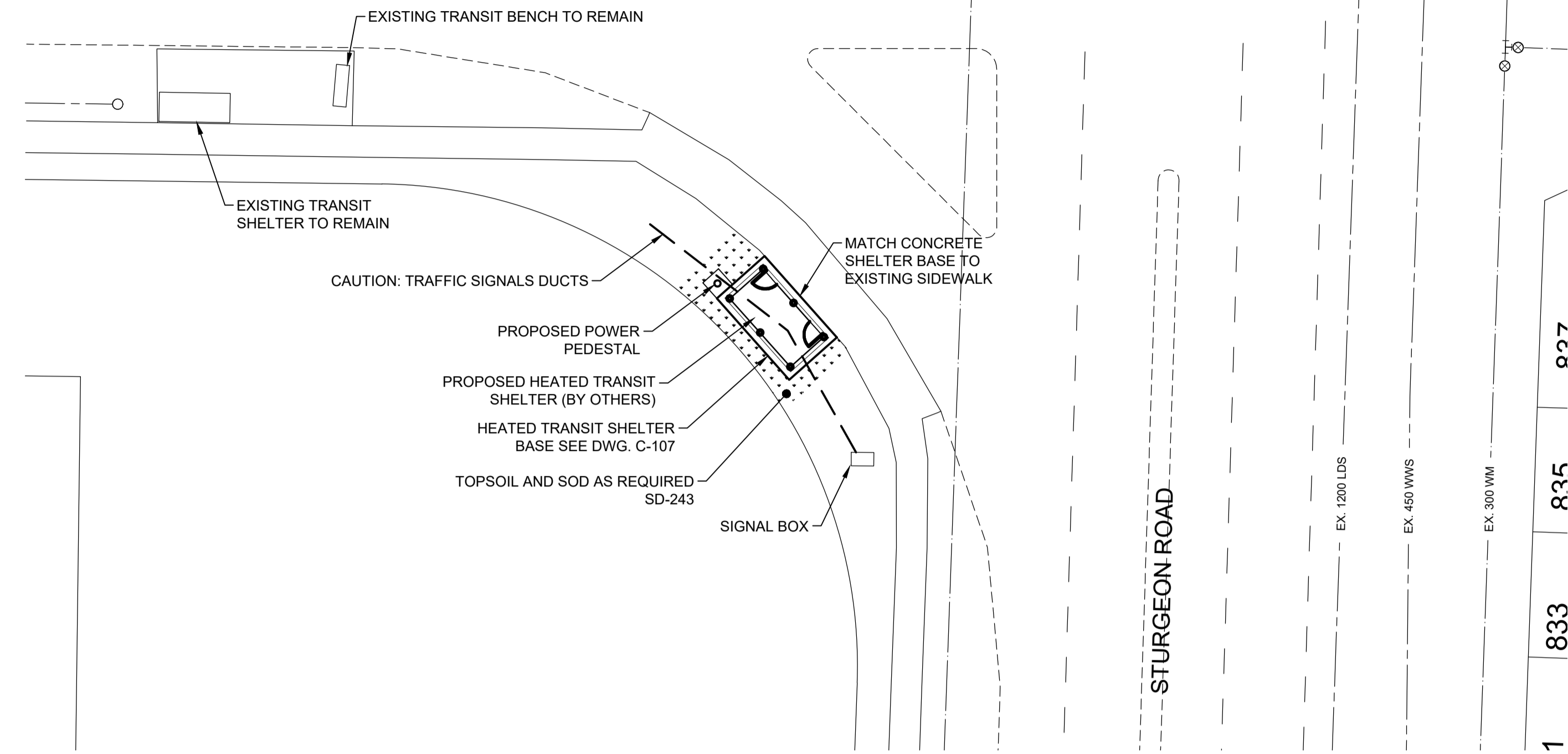


HS21-01

NESS AVENUE

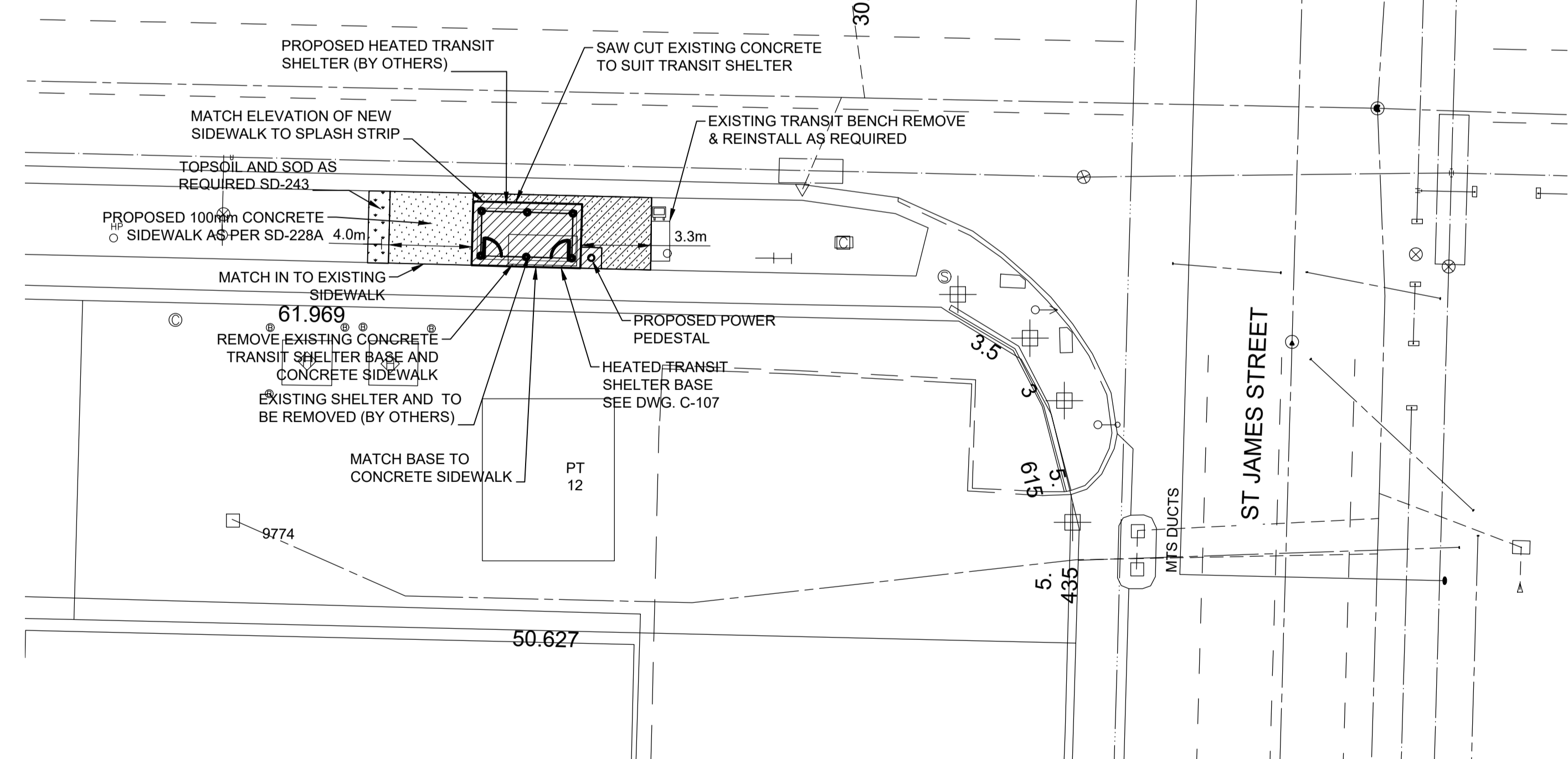


833 835 837



HS21-03

ELLICE AVENUE



WARNING

IF POWER EQUIPMENT OR EXPLOSIVES ARE TO BE USED FOR EXCAVATION ON THIS PROJECT THE CONTRACTOR MUST: 1) NOTIFY THE GAS COMPANY OF THE PROPOSED LOCATION OF EXCAVATION. 2) TAKE PRECAUTION TO AVOID DAMAGE TO GAS COMPANY INSTALLATIONS. SEE PROVINCIAL REGULATION 140/92 FOR DETAILS

METRIC

WHOLE NUMBERS INDICATE MILLIMETRES DECIMALIZED NUMBERS INDICATE METRES

Legend table with columns for EXISTING and PROPOSED, and rows for WATERMAIN, HYDRANT, VALVE, LAND DRAINAGE SEWER, WASTE WATER SEWER, MANHOLE, CATCH BASIN, CURB INLET, JUNCTIONS, CULVERT, GAS, and LEGEND-PLAN.

LOCATION APPROVED UNDERGROUND STRUCTURES

SUPV. U/G STRUCTURES COMMITTEE DATE

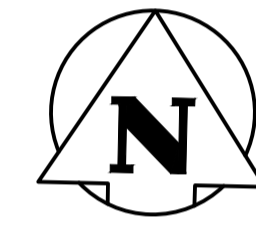
NOTE: LOCATION OF UNDERGROUND STRUCTURES AS SHOWN ARE BASED ON THE BEST INFORMATION AVAILABLE BUT NO GUARANTEE IS GIVEN THAT ALL EXISTING UTILITIES ARE SHOWN OR THAT THE GIVEN LOCATIONS ARE EXACT. CONFIRMATION OF EXISTENCE AND EXACT LOCATION OF ALL SERVICES MUST BE OBTAINED FROM THE INDIVIDUAL UTILITIES BEFORE PROCEEDING WITH CONSTRUCTION.

Table with columns for NO., REVISIONS, DATE, and BY, containing revision history.

Stantec logo and contact information (500 - 311 Portage Avenue, Winnipeg MB Canada R3B 2B9). Includes design and drawing dates.

PRELIMINARY DRAWING stamp with NOT TO BE USED FOR CONSTRUCTION and CONSULTANT DRAWING NO. C-106.

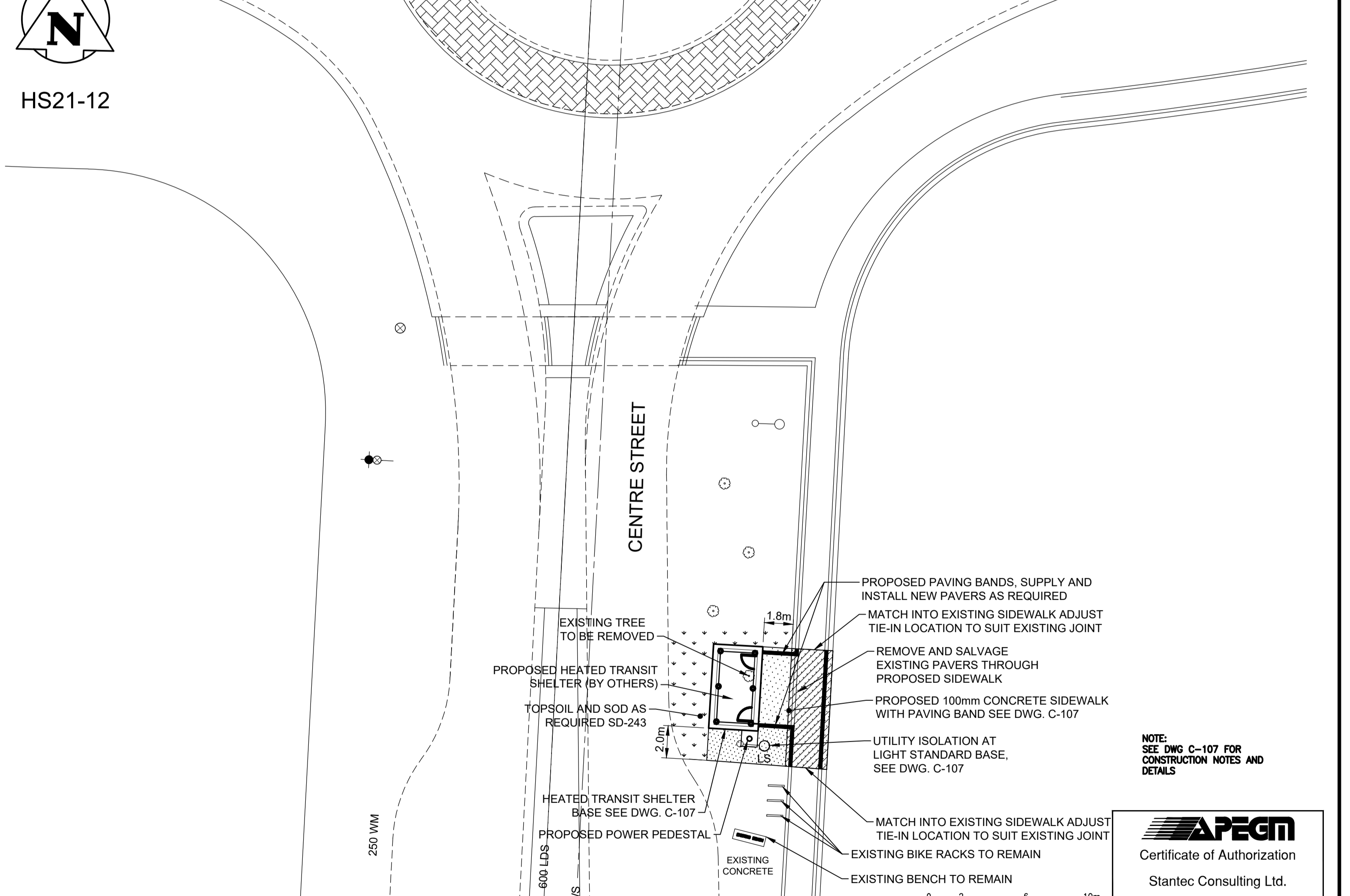
THE CITY OF WINNIPEG logo and project title HEATED TRANSIT SHELTERS PROPOSED WORKS. Includes SHEET 4 OF 5 and CAD FILE DRAWING NUMBER L3.



HS21-12

NORTH TOWN RD

NORTH TOWN RD



NOTE: SEE DWG C-107 FOR CONSTRUCTION NOTES AND DETAILS

APEGM Certificate of Authorization Stantec Consulting Ltd. No. 1301

VA 11371\city\113708480\0300\_drawing\0302\_sheet\_files\02\_civil\08480c-404.dwg 2021/09/02 3:15 PM By: Edgoc, Mark